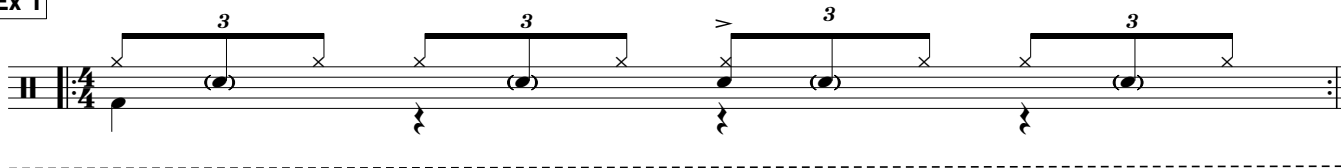


THE HALF-TIME SHUFFLE - PT.1

This iconic shuffle has just **one backbeat** within a bar and feels a little more spacious than a regular **Chicago shuffle**. This gives you room to add additional **ghost notes** on the middle partial of each triplet.

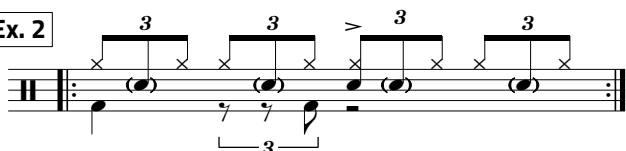
Ex. 1 gives you the main phrasing for the groove. Even this simple version can sound very effective!

Ex 1

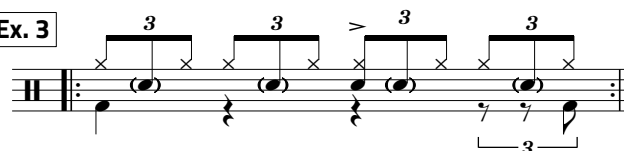


Once you are comfortable with the main outline, you can try these other variations:

Ex. 2



Ex. 3



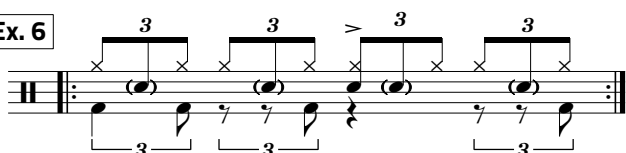
Ex. 4



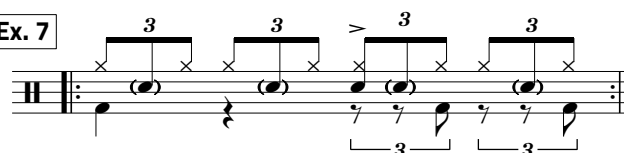
Ex. 5



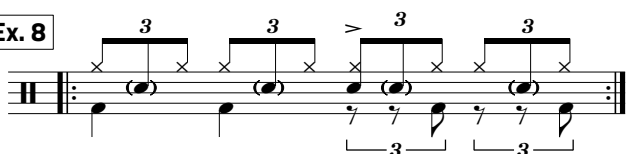
Ex. 6



Ex. 7



Ex. 8



Ex. 9

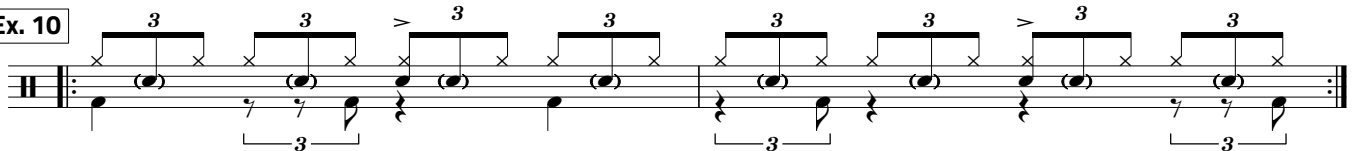


THE HALF-TIME SHUFFLE - PT.2

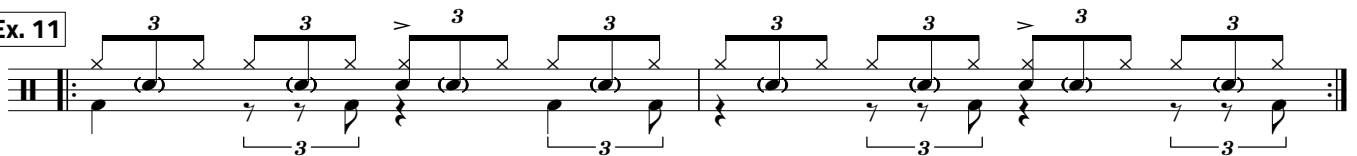
The half-time shuffle sounds particularly awesome when it's played as a **2-bar phrase**. It is very common to hear the shuffle played like this and you will hear this sort of feel on a lot of recordings!

'Rosanna' - Toto

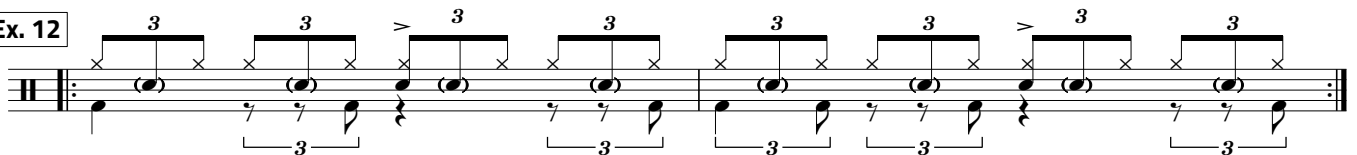
Ex. 10



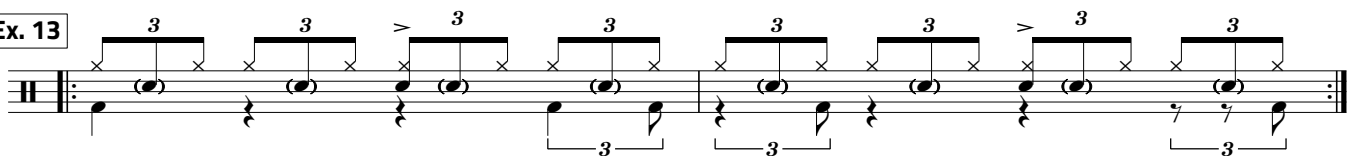
Ex. 11



Ex. 12



Ex. 13



Ex. 14

