

JAMIE JOINER

WWW.JAMIEJOINER.CO.UK

IN MY PLACE - COLDPLAY

♩ = 72

Drum Intro

Drum notation for the Drum Intro section, measures 1-8. The notation is on a single staff with a 4/4 time signature. It features a consistent pattern of eighth notes on the snare and bass drums, with hi-hats on the snare. The first measure starts with an asterisk (*). The dynamic marking *f* is placed below the first measure.

Riff

Drum notation for the Riff section, measures 3-6. The notation is on a single staff with a 4/4 time signature. It features a consistent pattern of eighth notes on the snare and bass drums, with hi-hats on the snare. The first measure starts with an asterisk (*). The dynamic marking *f* is placed below the first measure. A double bar line with a '2' above it is placed at the end of measure 6.

Drum notation for measures 7-8. The notation is on a single staff with a 4/4 time signature. It features a consistent pattern of eighth notes on the snare and bass drums, with hi-hats on the snare. The first measure starts with an asterisk (*). The dynamic marking *f* is placed below the first measure. A double bar line with a '2' above it is placed at the end of measure 8.

Verse

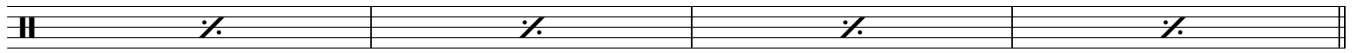
Drum notation for the Verse section, measures 11-14. The notation is on a single staff with a 4/4 time signature. It features a consistent pattern of eighth notes on the snare and bass drums, with hi-hats on the snare. The first measure starts with an asterisk (*). The dynamic marking *mf* is placed below the first measure. A double bar line with a '2' above it is placed at the end of measure 14. The text "2nd time only" is placed above the second measure.

Drum notation for measures 15-18. The notation is on a single staff with a 4/4 time signature. It features a consistent pattern of eighth notes on the snare and bass drums, with hi-hats on the snare. The first measure starts with an asterisk (*). The dynamic marking *mf* is placed below the first measure. A double bar line with a '2' above it is placed at the end of measure 18. The text "gradually open hi-hats..." is placed above the second measure.

Chorus

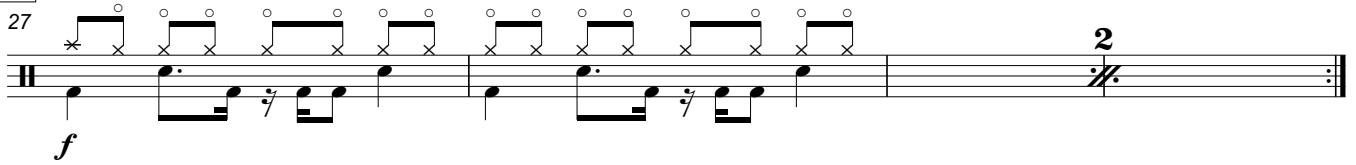
Drum notation for the Chorus section, measures 19-22. The notation is on a single staff with a 4/4 time signature. It features a consistent pattern of eighth notes on the snare and bass drums, with hi-hats on the snare. The first measure starts with an asterisk (*). The dynamic marking *mf* is placed below the first measure. A double bar line with a '2' above it is placed at the end of measure 22.

23



Riff

27



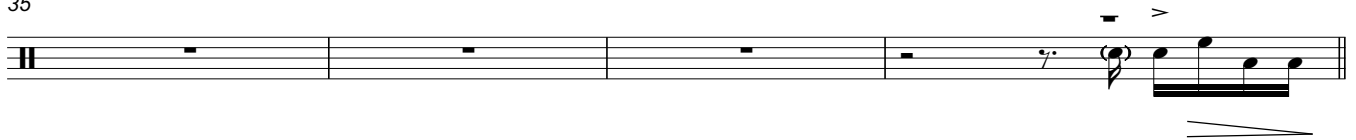
f

Break

31

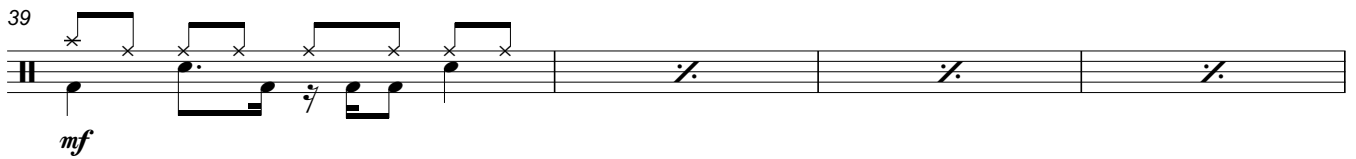


35



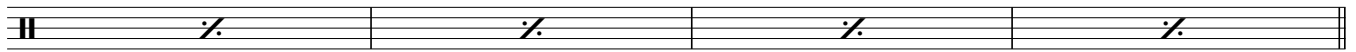
Chorus

39



mf

43



Outro

47



FINE