

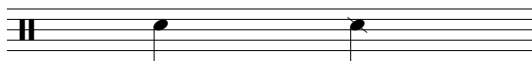
## RIM SHOTS

A **rim shot** is achieved by hitting the **rim** AND the **center** of the drum at the same time. This is most commonly used on the snare drum to achieve a louder note or accent. This can be to your advantage when you want to play louder without hitting harder, and can be especially great for rock and funk settings.

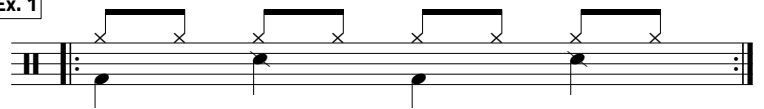
You can change the tone of the rim shot by moving the tip of your stick closer to the edge of the drum as you hit. This sound is more **metallic** so will be good for genres like as reggae or hip hop.

**TIP:** Be sure not to get **rim shots** confused with **rim clicks**. These are very different techniques and a lot of non-drummers don't know the difference! Rim shots are generally notated with a diagonal line through the note head.

Open snare      Rim shot



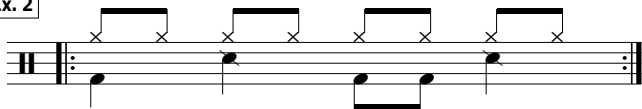
Ex. 1



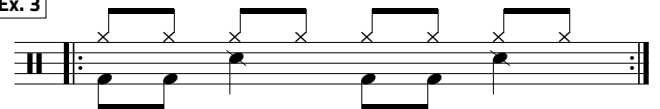
Now try adding some bass drum variation while trying to maintain a consistent rim shot sound:

**TIP:** If you find you need more room for your rim shot, try moving your hi-hat hand closer or further away from you.

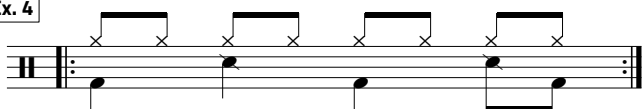
Ex. 2



Ex. 3



Ex. 4



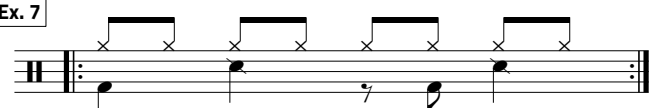
Ex. 5



Ex. 6



Ex. 7



Ex. 8



Ex. 9

